

TABLE FAQ

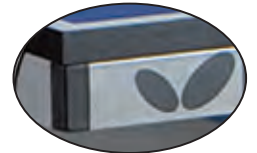
TOP

Simply put, the thicker the top, the better the bounce. A wood top that is at least 1/2" thick is suitable for home or recreational play. Many institutional tables are 5/8" to 3/4" thick. Almost all professional quality tables are a minimum of 7/8" to 1" thick.



RAIL

A heavy gauge steel rail will reinforce the structure of the table and provide additional support. It also serves a cosmetic purpose, adding to the beauty of your table.



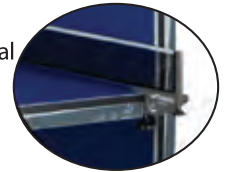
LEGS

Heavy gauge steel legs provide a solid foundation for your table. Round legs are sufficient, but square legs are more structurally sound.



NET

All of our tables come with a net set. Our Home and Outdoor use tables offer a basic net. The Institutional and Professional level models are equipped with a higher quality cloth net which clamps directly to the table and features heavy duty brackets with padded clamps that help protect the surface of the table. These nets also offer a dual precision height adjuster.



PLAYBACK POSITION

Most models allow you to fold up one half of the table and use it as a backboard. This will quicken reflexes and sharpen hand-eye coordination. A great feature for the kids.



ADJUSTABLE FEET

Many of our Institutional and Professional level tables have adjustable feet. This will ensure that the table is level, even when the floor is not.



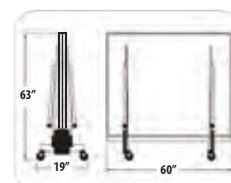
ACCESSORY HOLDER

Some models feature a convenient accessory holder that is integrated into the frame of the table. It will accommodate multiple rackets and balls. This system also allows the net to remain attached to the table during play as well as in the storage position.



DIMENSIONS

Measure your intended playing area before ordering a table. In the play position, the table measures 9' long by 5' wide. The net brackets will add approximately 1' to the width of the table. An additional 5' on each side of the table will allow a comfortable distance for play. Storage height will vary, so be sure to check the product descriptions for more information.



It is also a good idea to measure all doorways, hallways and stairwells that the table may encounter prior to reaching its final destination.